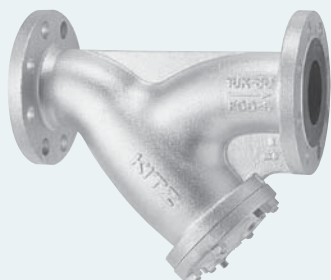


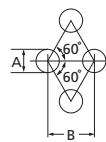
# 16K Y-Pattern Strainer

## 16FDYB

B.C. or S. C.  
RF-flanged

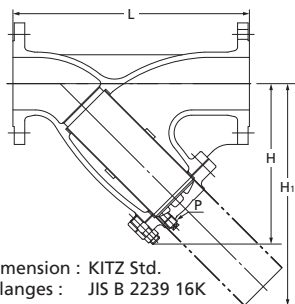


B.C. for 2" & larger  
S.C. for 1 1/2" & smaller

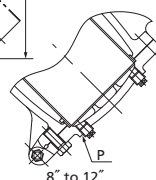
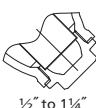


### Screen Hole Size

Valve Size	A	B
1/2" to 2"	1.4	2.4
2 1/2" to 5"	1.5	2.5
6" to 8"	3	5
10" to 12"	5	7



F-F dimension : KITZ Std.  
End flanges : JIS B 2239 16K



120°C Static water..... 2.2MPa  
220°C Steam, air, gas, oil..... 2.0MPa  
300°C Steam, air, gas, oil..... 1.8MPa  
350°C Steam, air, gas, oil..... 1.6MPa  
1/2" ~ 1 1/2" : 260°C ..... 1.9MPa

- Use for lubricating or hydraulic oil is acceptable. Contact KITZ Corporation for technical advice, if valves are used as heat transfer media.
- Employment of copper cap prohibits use of this valve for ammonia or amine chemicals.
- A gasket will be used for sealing the plug for application to high temperature exceeding 260°C. Specify your service temperature in advance. Ensure replacement of plug gaskets on your valve maintenance.

### Materials

Parts	JIS material
Body	FCD-S
Cap (1/2" ~ 1 1/2")	C3771BE
Cover (2" ~ 12")	FCD-S
Gasket	Non-asbestos (2" ~ 12" : Flexible Graphite)
Screen	SUS304
Cover bolt	Carbon Steel
Plug *	SUS304

\* 2 drain plugs will be provided for 8" & larger sizes.

### Dimensions

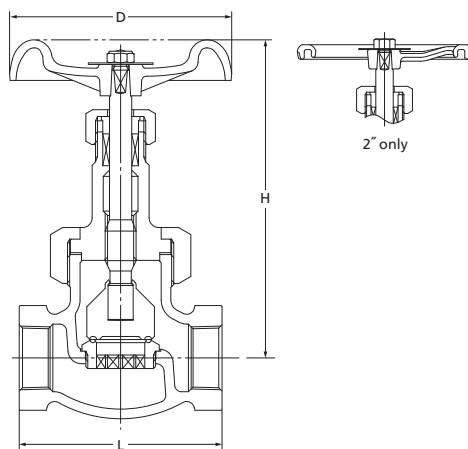
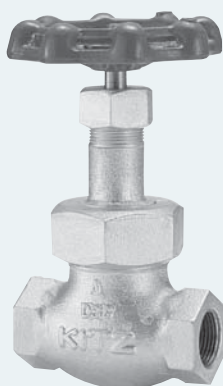
Size	mm													
	15	20	25	32	40	50	65	80	100	125	150	200	250	300
	1/2	3/4	1	1 1/4	1 1/2	2	2 1/2	3	4	5	6	8	10	12
L	125	140	150	170	190	250	305	360	415	465	515	580	680	800
H	57	63	77	90	100	168	212	242	284	325	370	462	536	625
P	—	—	—	—	Rc3/8	Rc1/4	Rc1/4	Rc1/4	Rc3/4	Rc3/4	Rc3/4	Rc3/4	Rc3/4	Rc3/4
H1	82	91	114	134	146	218	285	340	391	450	502	645	757	882

NOTE : For flange dimensions, refer to Page 40.

# 20K Globe Valve

## 20SY

U.B.I.S.



E-E dimension : KITZ Std.  
End threads : JIS B 0203

120°C Static water..... 2.8MPa  
220°C Steam, air, gas, oil..... 2.5MPa  
300°C Steam, air, gas, oil..... 2.3MPa  
350°C Steam, air, gas, oil..... 2.0MPa

- Use for lubricating or hydraulic oil is acceptable. Contact KITZ Corporation for technical advice, if valves are used as heat transfer media.
- Employment of copper gasket prohibits use of this valve for ammonia or amine chemicals.

### Materials

Parts	JIS material
Body	FCD-S
Bonnet	FCD-S
Stem	SUS420J2
Disc	SUS403 + HF *
Body seat ring	SCS13A + HF *
Gland	SUS403 (3/8" & 1/2" : SUS420J2)
Gland packing	Non-asbestos Packing
Packing nut	FCD-S
Handwheel	FCD450-10 (2" : FCD400)
Wheel nut	SS400
Bonnet ring	FCD-S
Gasket	C1100P-0
Name plate	A1050P

\* Hard-faced with Co-Cr-W alloy

### Dimensions

Size	mm						
	10	15	20	25	32	40	50
	3/8	1/2	3/4	1	1 1/4	1 1/2	2
L	75	78	91	105	122	135	160
H (open)	136	138	157	178	202	210	239
D	70	80	100	115	135	135	180